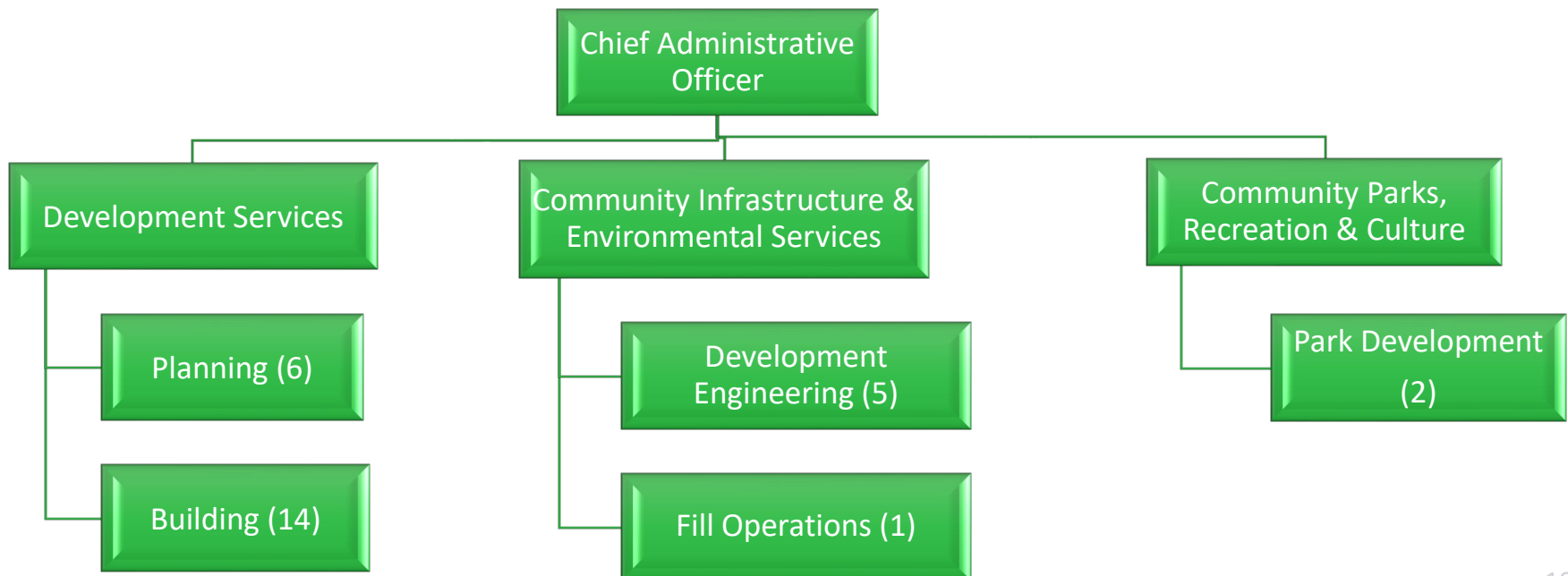


The Development and Fee Supported budget requires no support from property tax revenue. The Town has approved fees and charges that are intended to provide full cost recovery for the services provided under each of the individual budgets. Any surplus or deficit generated in these areas are managed through contributions or draws from reserves.

The development and fee supported budget is comprised of five individual branches. The Planning and Building branches reside within the Development Services department. The Development Engineering and Fill Operation branches reside within Community Infrastructure and Environmental Services. The Park Development branch resides within the Community Parks, Recreation and Culture department.



Budget Summary

The Development and Fee Supported operating budget includes expenditures of approximately \$4.9 million and are fully supported by fees rather than tax support. A full cost recovery, user pay system has been established for each of these areas. The net budget is zero for each branch, as any surplus/deficit is managed through contributions to or draws from reserve. The reserve is established to manage the ebb and flow of activity and ensure that the program is self-sustaining in a year of low activity.

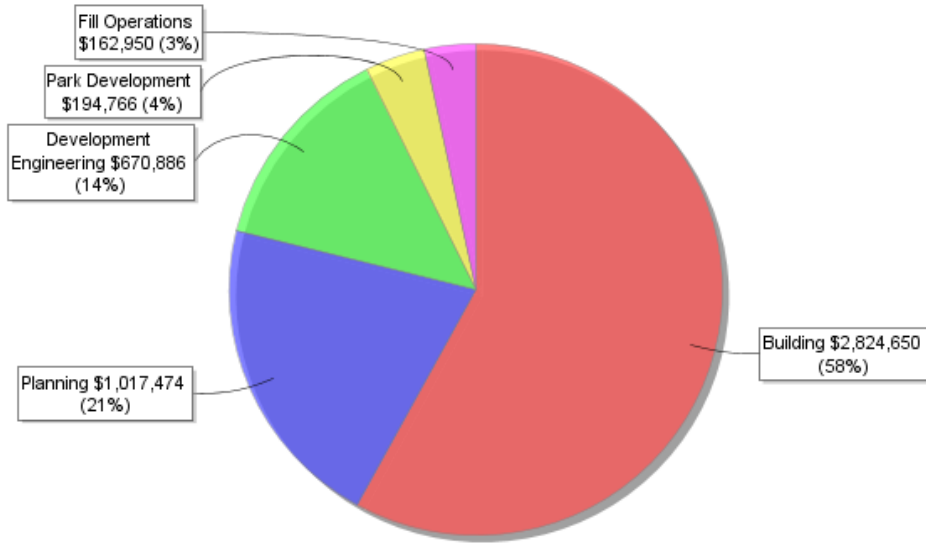
Salaries and benefits have increased by approximately \$144,000 due to market adjusted band increases in Planning and Park Development, step increases and benefit adjustments.

An increase in training and professional development is a one time increase for specialized leadership training within the Planning branch. Indirect corporate costs have been reviewed and adjusted to ensure that the appropriate support costs are allocated to the fee supported areas and capital projects.

Revenues in each area have been adjusted based on estimated levels of activity in 2022. Increases are expected in both the Building and Planning areas resulting in an expected increase in revenue of approximately \$266,000.

The key section in these individual budgets is the transfers. Contributions to reserves are an indication that the revenues generated exceed expenditures. Draws from reserves indicate that the budgeted revenues aren't sufficient to support the anticipated expenditures within the year. It is important to recognize that the reserve is established to manage the timing of revenues with the activity.

Expenditures by Branch



Revenues by Branch

