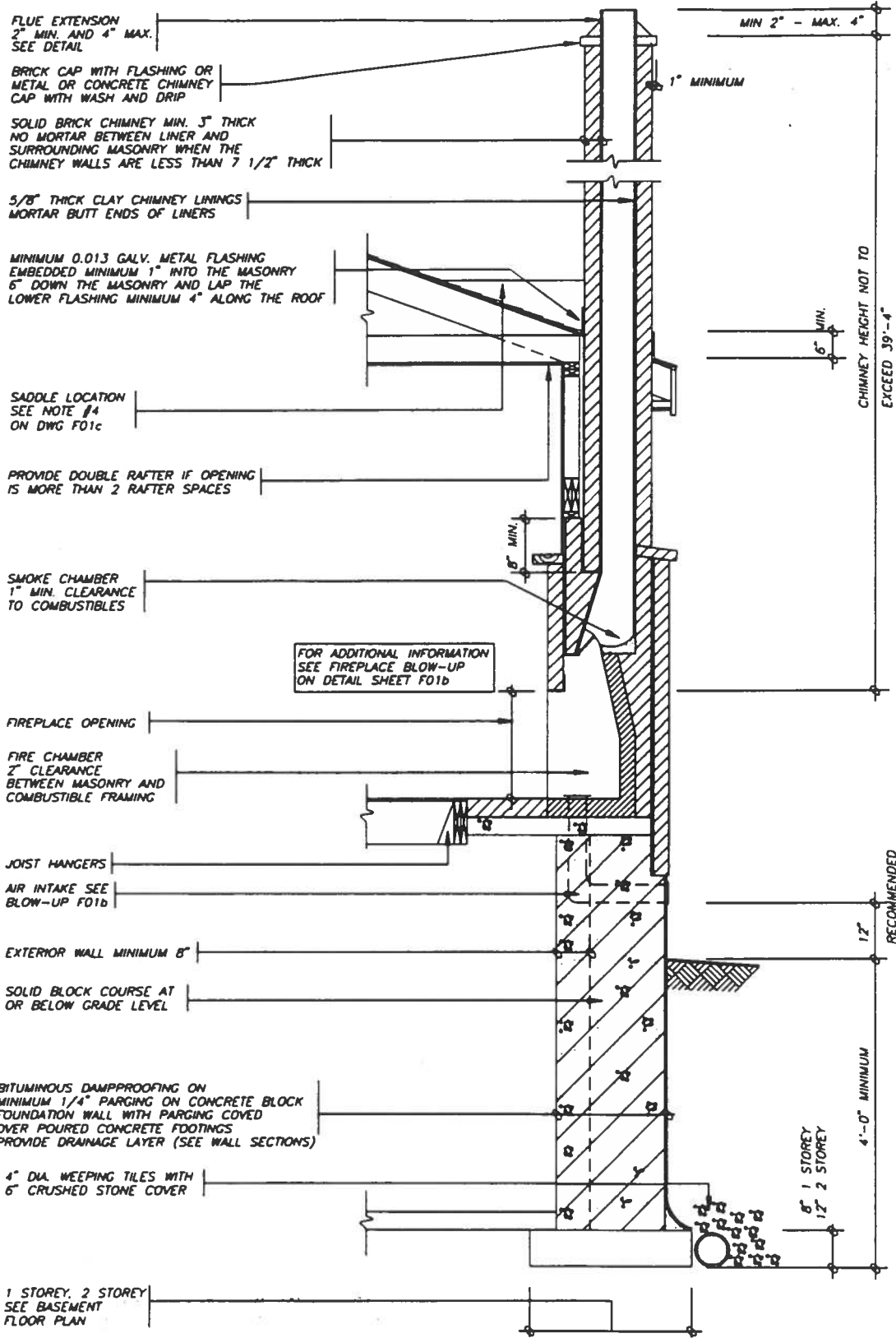


brampton • burlington • east york • etobicoke • hamilton • markham • mississauga • north york • oakville • oshawa • richmond hill • scarborough • toronto • vaughan • york

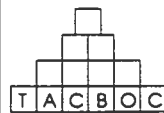
brampton • burlington • east york • etobicoke • hamilton • markham • mississauga • north york • oakville • oshawa • richmond hill • scarborough • toronto • vaughan • york



PERMIT APPLICATION NUMBER

REVIEWED BY

DATE



Masonry Fireplace
Section

F01a

02-94

brar., • burlington • east york • etobicoke • hamilton • markham • mississauga • north york • oakville • oshawa • richmond hill • scarborough • toronto • vaughan • york

brampton • burlington • east york • etobicoke • hamilton • markham • mississauga • north york • oakville • oshawa • richmond hill • scarborough • toronto • vaughan • york

3/8" AIR SPACE BETWEEN LINER AND MASONRY

MIN. 1/2" CLEARANCE TO COMBUSTIBLE MATERIAL

3 1/2" x 3 1/2" x 1/4" ANGLE FOR MASONRY SUPPORT

MIN. CLEARANCE FROM FIREPLACE OPENING TO COMBUSTIBLE MATERIAL SHALL BE 6", OR 12" IF COMBUSTIBLE MATERIAL PROJECTS MORE THAN 2" OUT FROM THE FACE OF THE FIREPLACE

SMOKE CHAMBER WALLS MIN. 7 1/2" SIDES, FRONT AND BACK EXCEPT IF EXPOSED TO THE OUTSIDE MAY BE 5 1/2"

CORBELLED SMOKE CHAMBER WITH PARGING RECOMMENDED, MAX. 45° SLOPE TO VERTICAL

EVERY FIREPLACE SHALL HAVE A METAL DAMPER TO COVER THE FULL EXTENT OF THE THROAT OPENING

3 1/2" x 3 1/2" x 1/4" ANGLE OR MASONRY ARCH

FIREBRICK TO BE SET IN FIRE CLAY OR HIGH TEMPERATURE MORTAR

FIREBOX WALLS MIN. 7 1/2" WHERE A METAL LINER OR 2" THICK FIREBRICK IS USED INCLUDING THE THICKNESS OF THE MASONRY LINER STAGGER JOINTS BETWEEN WYTHES

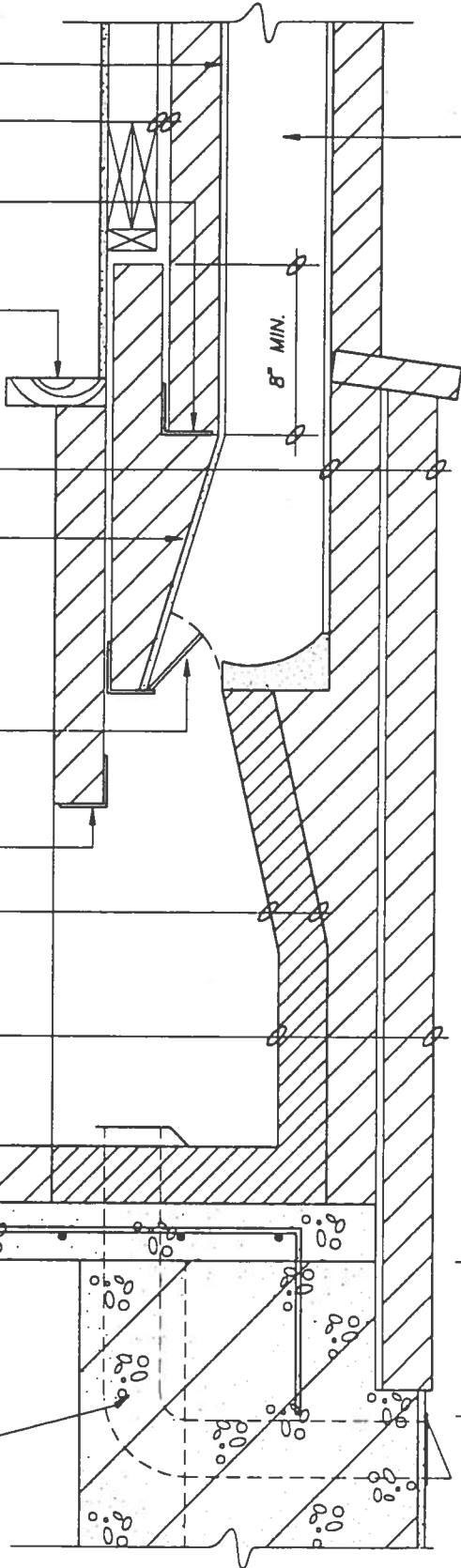
HEARTH TO BE SUPPORTED ON 4" CONC. SLAB REINFORCED WITH 10M BARS AT 12" EACH WAY

4" DIA. COMBUSTION AIR SUPPLY INSULATED NON COMBUSTIBLE DUCT WITH OPERABLE DAMPER AND INSECT SCREEN. MIN. 2" TO COMBUSTIBLE MATERIAL

CHIMNEY FLUE SIZE AS PER TABLE, F01c

8" MIN.

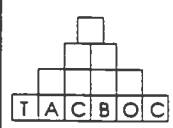
9" MIN.



PERMIT APPLICATION NUMBER

REVIEWED BY

DATE



Masonry Fireplace
Detail

F01b

02-94

brampton • burlington • east york • etobicoke • hamilton • markham • mississauga • north york • oakville • oshawa • richmond hill • scarborough • toronto • vaughan • york

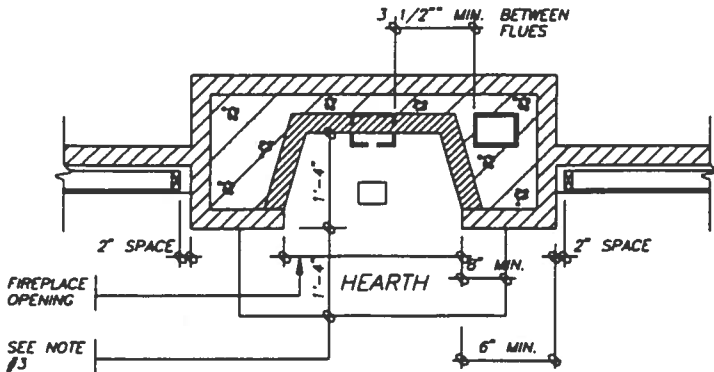
brampton • burlington • east york • etobicoke • hamilton • markham • mississauga • north york • oakville • oshawa • richmond hill • scarborough • toronto • vaughan • york

24" MINIMUM ABOVE THE HIGHEST ROOF SURFACE OR STRUCTURE WITHIN 9'-10" OF THE CHIMNEY

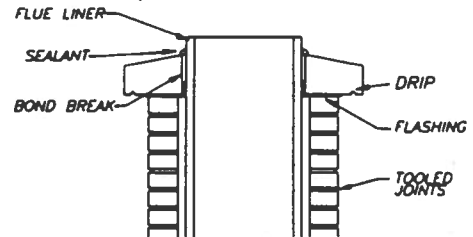
CHIMNEY HEIGHTS

A CHIMNEY FLUE SHALL BE MINIMUM 2'-11" ABOVE THE HIGHEST POINT AT WHICH THE CHIMNEY COMES IN CONTACT WITH THE ROOF

PROVIDE ROD OR ANGLE BRACING FOR LATERAL STABILITY IF CHIMNEY EXTENDS 11'-10" ABOVE ROOF



PLAN



CONCRETE CHIMNEY CAP CONSTRUCTION DETAILS

NOMINAL RECTANGULAR FLUE SIZES (outside dimensions)				
MAXIMUM FIREPLACE OPENING (FT ²)	CHIMNEY HEIGHT (FEET)			
	9.8-16.4	16.41-19.6	19.61-29.5	29.51
0-1.6	8" x 8"	8" x 8"	4" x 8"	4" x 8"
more than 1.6-2.7	8" x 8"	8" x 8"	8" x 8"	8" x 8"
more than 2.7-3.8	8" x 12"	8" x 8"	8" x 8"	8" x 8"
more than 3.8-5.4	12" x 12"	8" x 12"	8" x 12"	8" x 12"
more than 5.4-7.0	12" x 12"	12" x 12"	12" x 12"	8" x 12"
more than 7.0-8.6	12" x 16"	12" x 12"	12" x 12"	12" x 12"
more than 8.6-10.8	16" x 16"	12" x 16"	16" x 16"	12" x 12"
more than 10.8-12.9	16" x 16"	16" x 16"	12" x 16"	12" x 16"
more than 12.9-15.1	—	16" x 16"	16" x 16"	12" x 16"
more than 15.1-17.2	—	—	16" x 16"	16" x 16"
more than 17.2-19.4	—	—	—	16" x 16"
more than 19.4-21.5	—	—	—	—
more than 21.5-23.7	—	—	—	—

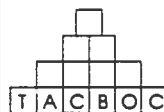
NOTES:

- JOISTS OR BEAMS SUPPORTED ON MASONRY WALLS ENCLOSING CHIMNEY FLUE SHALL BE SEPARATED BY 12" OF SOLID MASONRY.
- MAXIMUM ANGLE OF SLOPE FOR SMOKE CHAMBER IS 45° FROM VERTICAL.
- FLOORING SHALL HAVE A MINIMUM 1/2" CLEARANCE TO MASONRY CHIMNEY.
- SADDLE NOT REQUIRED IF FLASHING USED THAT EXTENDS UP THE CHIMNEY TO HEIGHT EQUAL TO NOT LESS THAN 1/6 THE WIDTH OF CHIMNEY, BUT NOT LESS THAN 6" UP THE ROOF SLOPE TO A POINT EQUAL IN HEIGHT TO THE FLASHING ON THE CHIMNEY, BUT NOT LESS THAN 1 1/2 TIMES THE SHINGLE EXPOSURE. PROVIDE COUNTERFLASHING AT CHIMNEY.
- HEARTH EXTENSION
 - EXCEPT AS REQUIRED IN SENTENCE (2) FIREPLACES SHALL HAVE A NONCOMBUSTIBLE HEARTH EXTENDING NOT LESS THAN 16" IN FRONT OF THE FIREPLACE OPENING MEASURED FROM THE FACING AND NOT LESS THAN 8" BEYOND EACH SIDE OF THE FIREPLACE OPENING.
 - WHERE THE HEARTH IS ELEVATED MORE THAN 6" ABOVE THE HEARTH EXTENSION, THE WIDTH OF THE HEARTH EXTENSION SHALL BE INCREASED BY:
 - 2" FOR AN ELEVATION ABOVE 6" AND NOT MORE THAN 12" AND
 - AN ADDITIONAL 1" FOR EVERY 2" IN ELEVATION ABOVE 12"
- INSTALL A CARBON MONOXIDE DETECTOR CONFORMING TO CAN/CGA-6.19 IN COMPLIANCE WITH O.B.C. 9.32.3.8.

PERMIT APPLICATION NUMBER

REVIEWED BY

DATE



Masonry Fireplace
Plan, Elevation and Notes

F01c

02-94