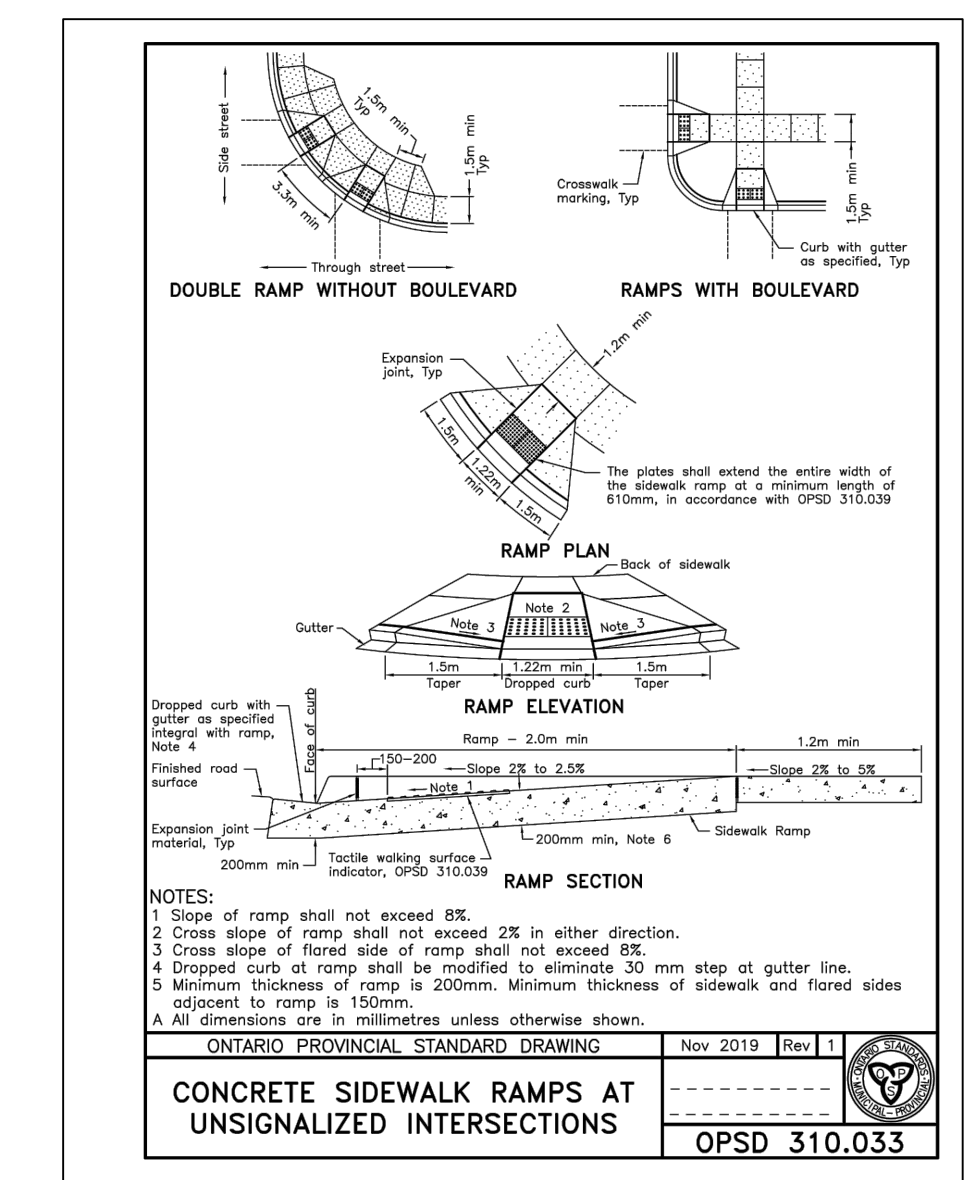
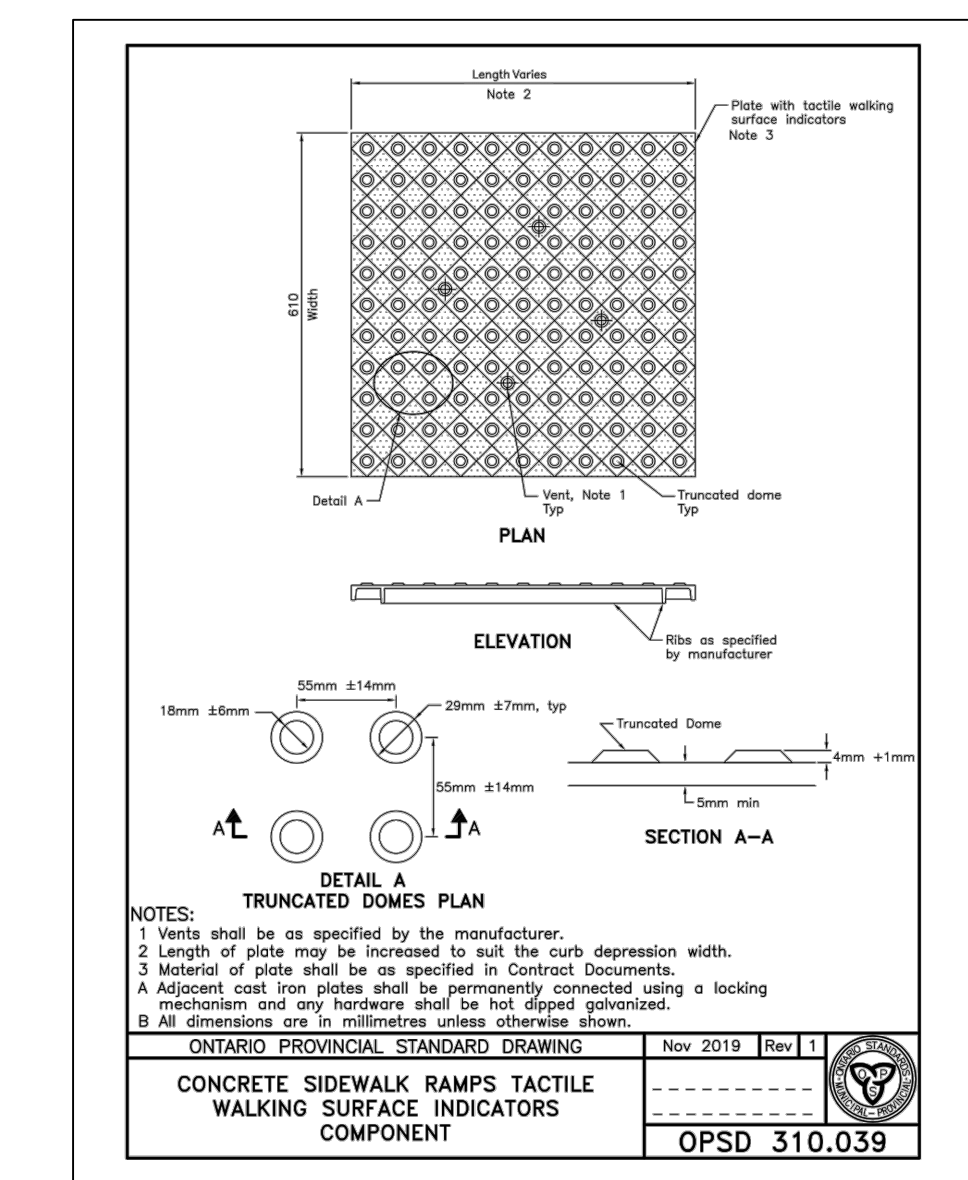
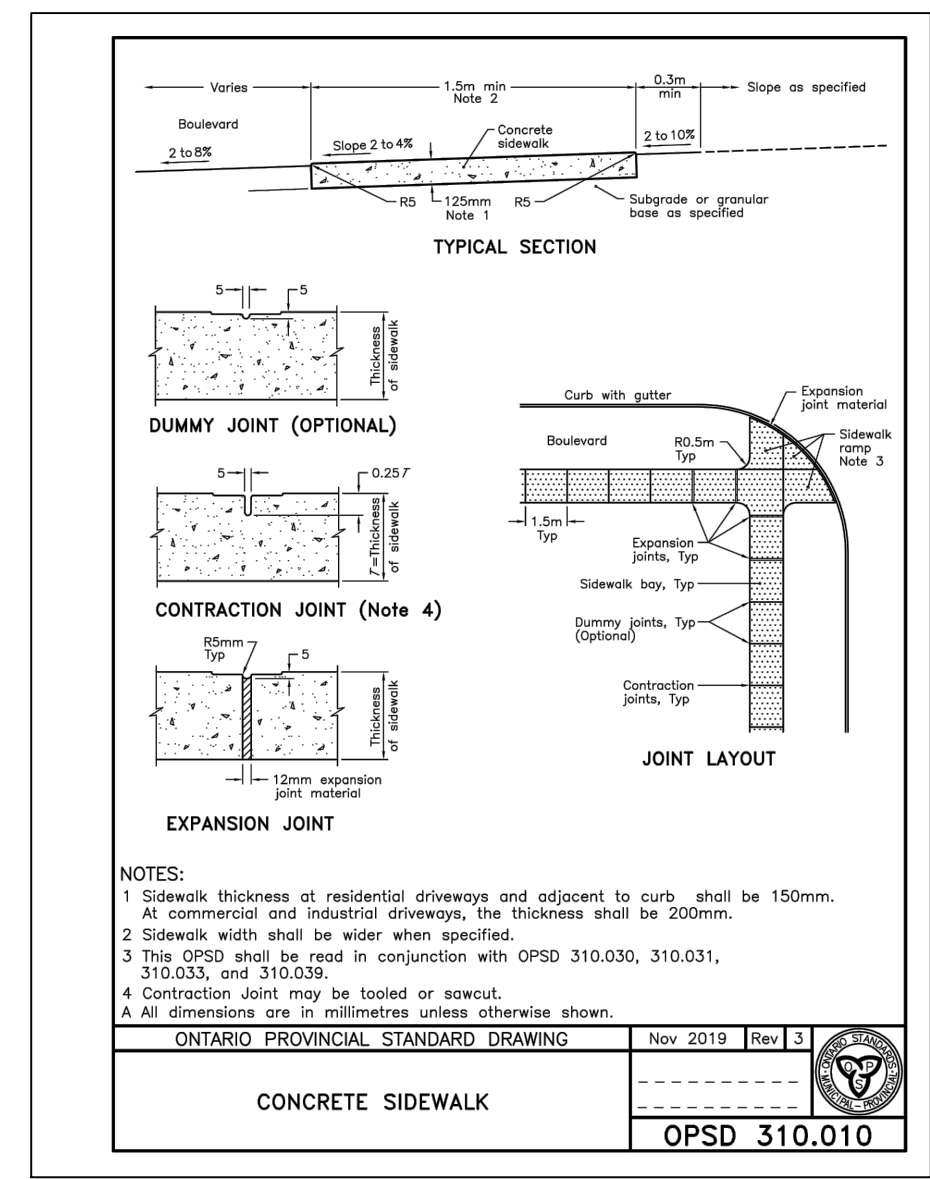
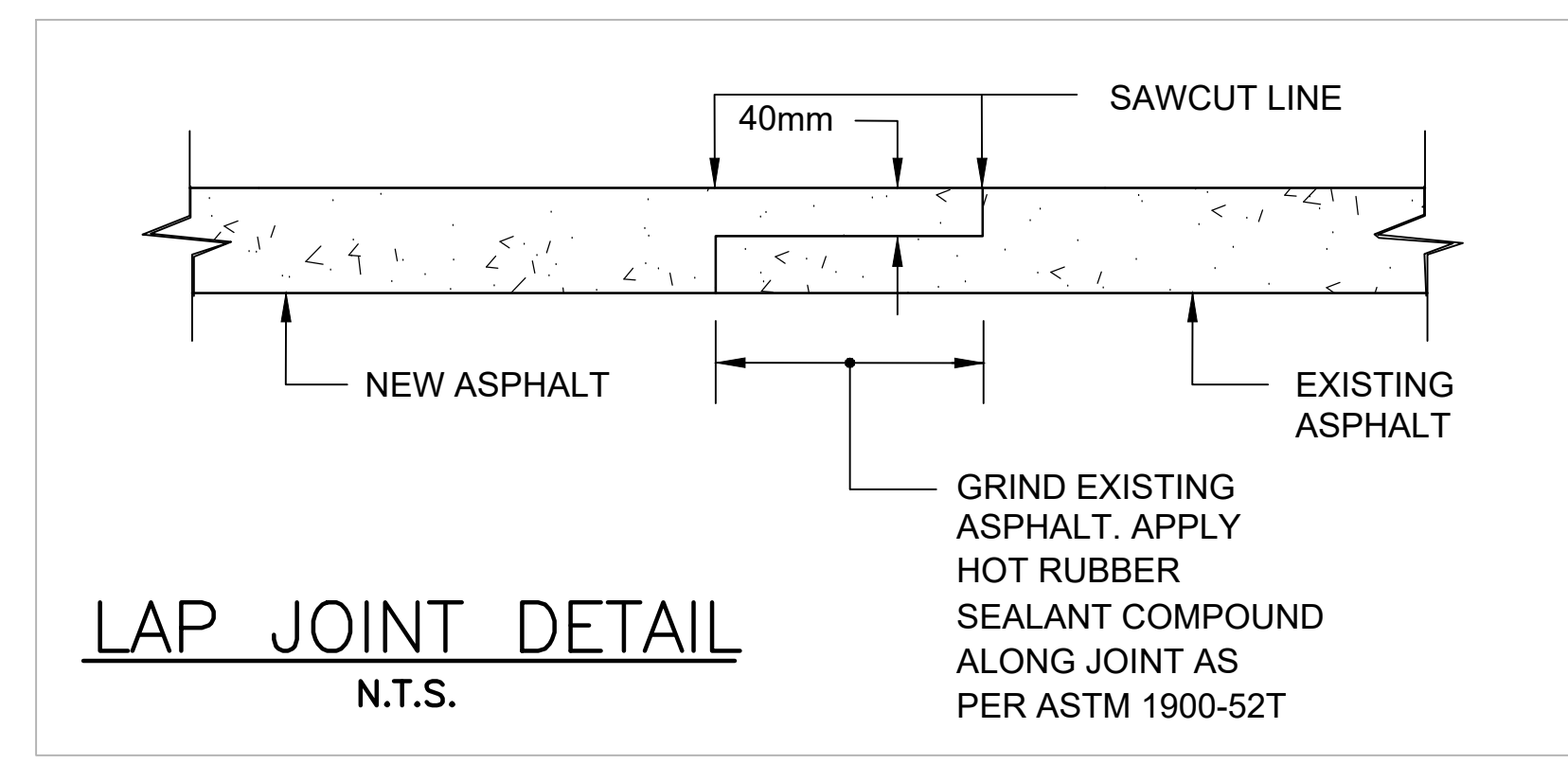
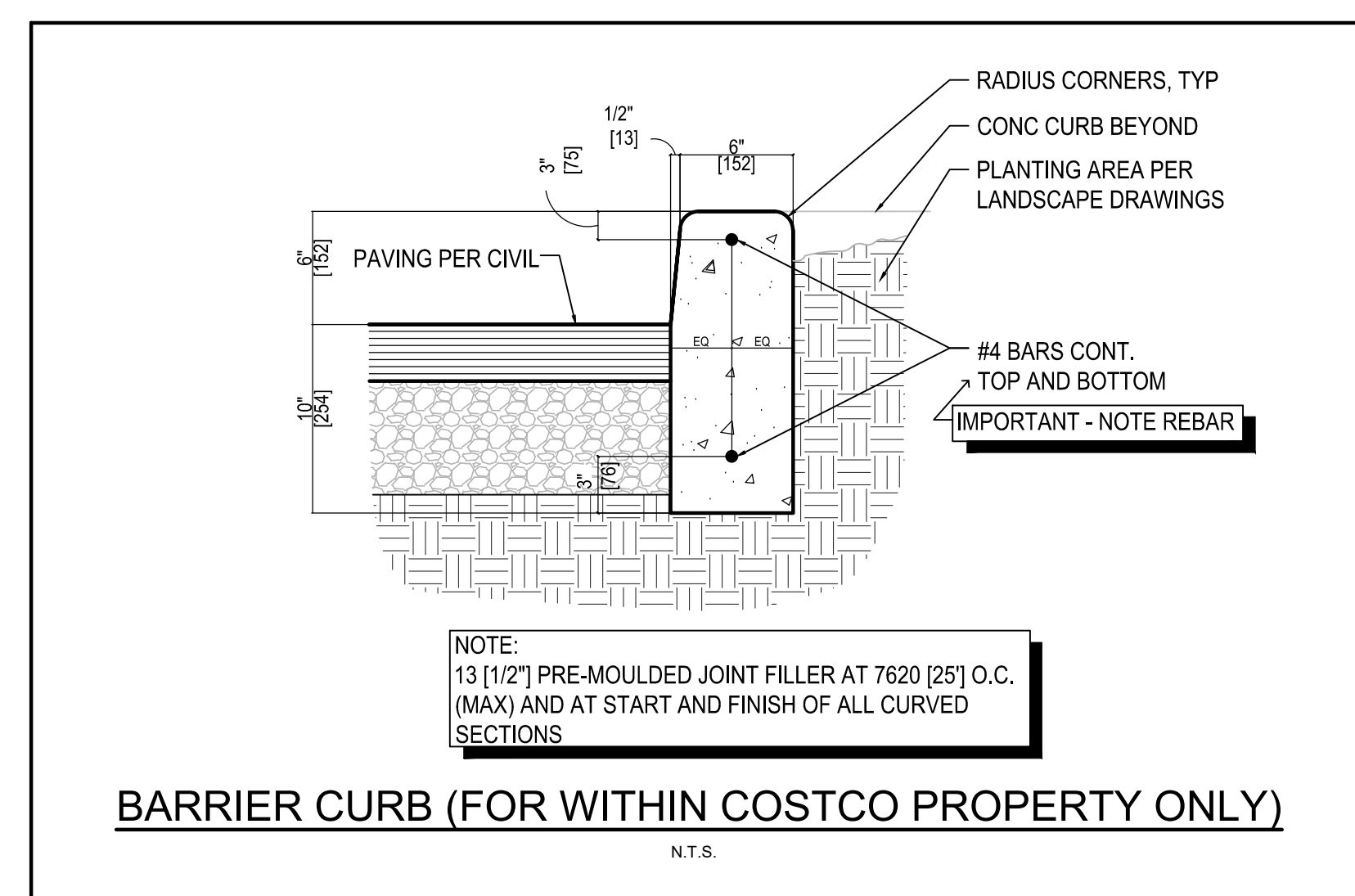
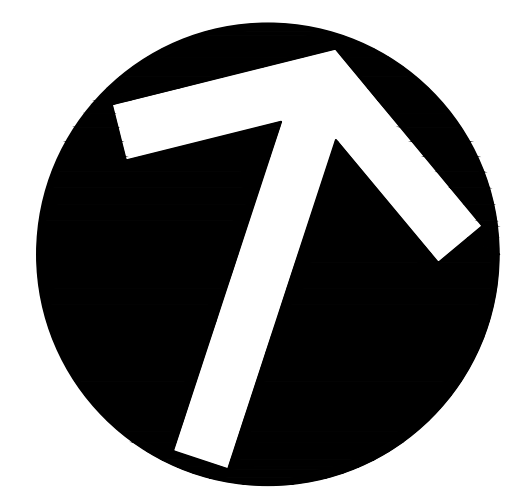
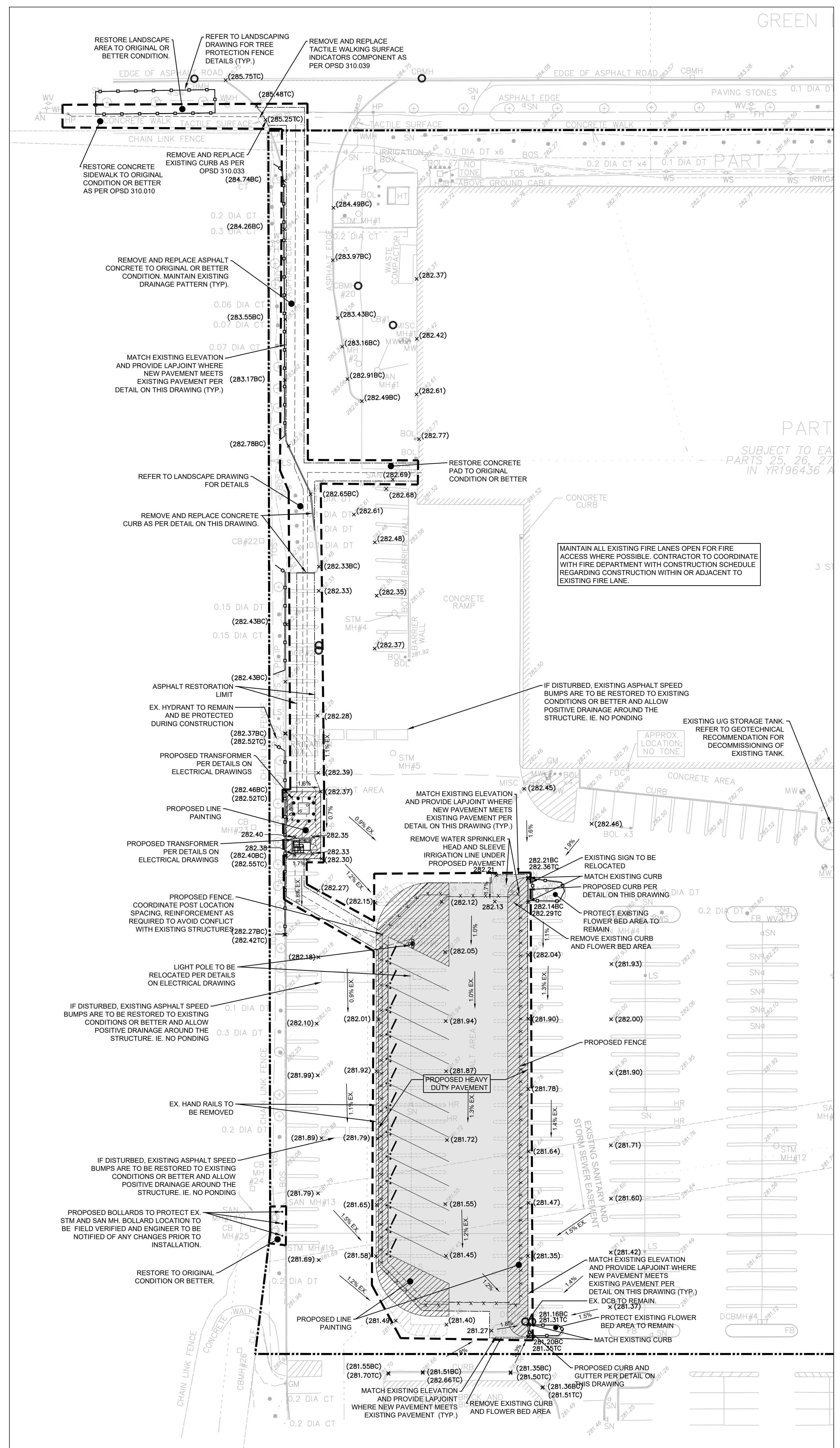


KEY PLAN NTS

LEGEND

- COSTCO PROPERTY LINE
- - - PROPOSED CURB
- - - PROPOSED FENCE
- - - DIRECTION OF DRAINAGE
- EXISTING CATCHBASIN
- EXISTING DOUBLE CATCHBASIN
- EXISTING STORM MANHOLE
- EXISTING SANITARY MANHOLE
- x281.00 PROPOSED GRADE
- x281.00TC PROPOSED TOP OF CURB GRADE
- x281.00BC PROPOSED BOTTOM OF CURB GRADE
- x281.00 EXISTING GRADE
- x281.00BC EXISTING BOTTOM OF CURB GRADE
- x281.00TC EXISTING TOP OF CURB GRADE
- - - LIMIT OF WORK BY COSTCO GC
- - - SILTATION PROTECTION
- ▨ PROPOSED LINE PAINTING
- ▨ PROPOSED HEAVY DUTY PAVEMENT
- - - PROPOSED ELECTRICAL UTILITY
- - - PROPOSED ASPHALT RESTORATION LIMIT
- ○ ○ TREE PROTECTION FENCE



CONTRACTOR TO PROTECT EXISTING TREES AND EXISTING TREES TO BE RELOCATED. SEE LANDSCAPE PLAN FOR DETAILS.

REFER TO ARCHITECTURAL PLAN FOR LINE PAINTING SYMBOLS AND SIGNAGE.

RESTORE EXISTING PAVEMENT MARKING AS NECESSARY TO ACHIEVE FINAL PAVEMENT MARKING LAYOUT AS PER ARCHITECTURAL PLANS.

PAVEMENT STRUCTURE AS PER GEOTECHNICAL REPORT 1-09-4216 BY TERRAPROBE LIMITED.

LIGHT DUTY PAVEMENT:
 40mm Surface course asphaltic concrete
 40mm Course base asphaltic concrete
 150mm Granular 'A' (OPSS 1010)
 200mm Granular 'B' Type I sub-base (OPSS 1010)
 430mm

HEAVY DUTY PAVEMENT:
 40mm Surface course asphaltic concrete
 80mm Course base asphaltic concrete
 150mm Granular 'A' (OPSS 1010)
 300mm Granular 'B' Type I sub-base (OPSS 1010)
 570mm

HYDRO CONDUITS/DUCT BANK, POWER CABLES TO PEDESTALS, COMMUNICATION CABLES, ETC. ARE SHOWN FOR COORDINATION, AND AN ESTIMATE OF RESTORATION REQUIRED ONLY. PLEASE REFER TO JSB ENGINEERING DRAWING FOR FINAL LOCATION AND DETAILS. CONTACT ARCHITECT AND ENGINEER, IF FIELD ADJUSTMENT NOTED BY I&B ENGINEERING CONFLICTS WITH EXISTING SITE STRUCTURES.

REFER TO ELECTRICAL DRAWINGS FOR POWER SUPPLY, COMMUNICATIONS AND SITE LIGHTING DETAILS. COORDINATE WITH ELECTRICAL CONTRACTOR FOR REMOVALS AND RESTORATION REQUIRED TO RELOCATE AND INSTALL NEW SERVICES.

WHERE PROPOSED CURB, NEW PAVEMENT AND PAVEMENT RESTORATION ABUTS EXISTING PAVEMENT, SAWCUT EXISTING PAVEMENT AND APPLY LAP JOINT AT EDGES.

WITHIN PARKING LOT EXPANSION CURBS TO BE CONSTRUCTED WITH COSTCO CURB AND GUTTER WITH REBAR DETAIL. EXISTING WAREHOUSE SITE'S CURB REPAIR, IF ANY, TO BE PER COSTCO BARRIER CURB WITH REBAR DETAILS.

GRADE POINTS AT CURB ARE BOTTOM OF CURB ELEVATIONS UNLESS OTHERWISE NOTED.

No.	REVISIONS TO DRAWING	BY	DATE	APPR.
2	RE-ISSUED FOR SITE PLAN SUBMISSION	NCW	03-14-2025	
1	ISSUED FOR SITE PLAN SUBMISSION	NCW	20-11-2024	

CLIENT: **COSTCO WHOLESALE**

MUNICIPALITY: **TOWN OF EAST GWILLIMBURY**

PROJECT TITLE: **COSTCO EAST GWILLIMBURY**

18182 YONGE STREET, ON L3N 0J3

SHEET TITLE: **SITE GRADING PLAN**

wsp

LICENSED PROFESSIONAL ENGINEER
 H. C. WONG
 100145245
 2025/03/14
 PROVINCE OF ONTARIO

DESIGNED: R.C.S.B.	DRAWN: N.C.W.	CHECKED: N.C.W.
SCALE: 1:350	DATE: MARCH 2025	
PROJECT NUMBER: 211-07806-00	DWG. NUMBER: SG1	

FILENAME: C:\Users\carol\OneDrive\Work\Projects\WSP\211-07806-00\Drawings\Site\SiteGrading\211-07806-00-SG1.dwg
 PLOT DATE: Mar 12, 2025 - 12:04:03 PM