

SITE PLAN LEGEND

- ### GENERAL SITE PLAN NOTES
- FOR ALL PLANTS SIZE, TYPE AND LOCATION REFER TO LANDSCAPE DRAWINGS.
 - SEE LANDSCAPE DWGS FOR ALL OUTDOOR FEATURES DETAILS.
 - INSTALLATION DATE OF R.O.W. TREES IS UNKNOWN. TREE PROTECTION TO BE INSTALLED WITH 48 HOURS OF TREES BEING PLANTED UNLESS TREES ARE PRESENT PRIOR TO CONSTRUCTION. THIS TREE PROTECTION TO BE INSTALLED PRIOR TO START OF THE WORK. R.O.W. TREES ARE N.I.C.
 - CONTRACTOR TO OBTAIN AN ACCESS TO PROPERTY PERMIT FROM TOWN OF EAST GWILMBURY ROAD OPERATIONS BRANCHES REQUIRED.
 - REFER TO SITE SERVING DRAWING FOR SUB-SURFACE DRAINAGE BELOW THE ARTIFICIAL TURF AREAS.

YORK CATHOLIC DISTRICT SCHOOL BOARD

QUEENSVILLE CATHOLIC ELEMENTARY SCHOOL
235 Murray Leonard Lane
East Gwillimbury, ON

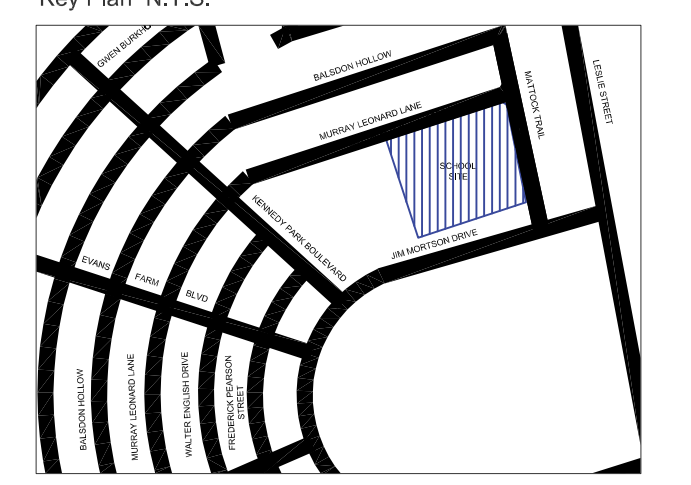
Architect
sn/der
Snyder Architects Inc.
100 Broadview Ave, Suite 301,
Toronto, ON, M4M 3H3
Tel: 416-966-5444

Structural Consultant
Stephenson Engineering
Toronto, Ontario, M2J 5B5
Tel: 416-533-9970

Civil Engineer
Flora Designs Inc.
1180 Brimley Road East
Mississauga, Ontario, L4W 3X1
Tel: 647-496-0055

Landscape Consultant
HKLA
230 Westhew Road, Suite 308
Ajax, ON L5S 7P9
Tel: 905-839-5599

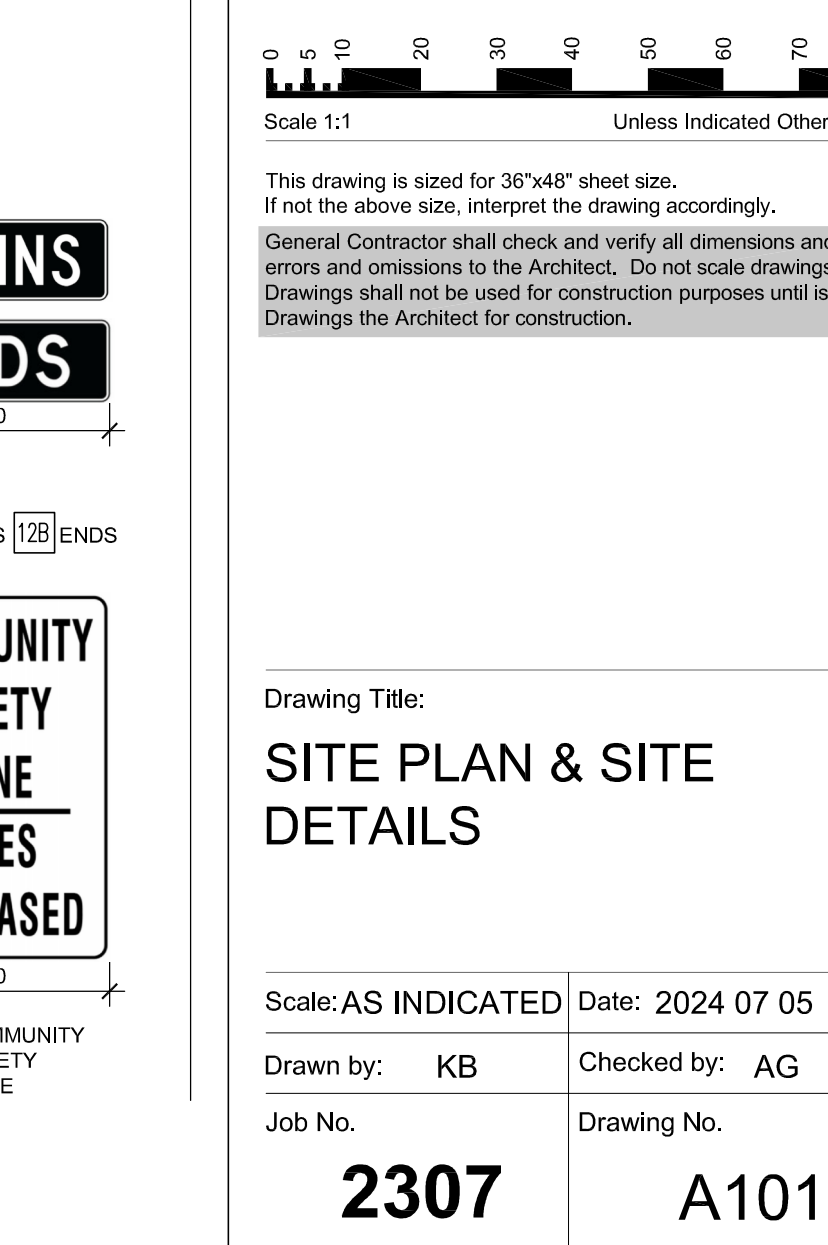
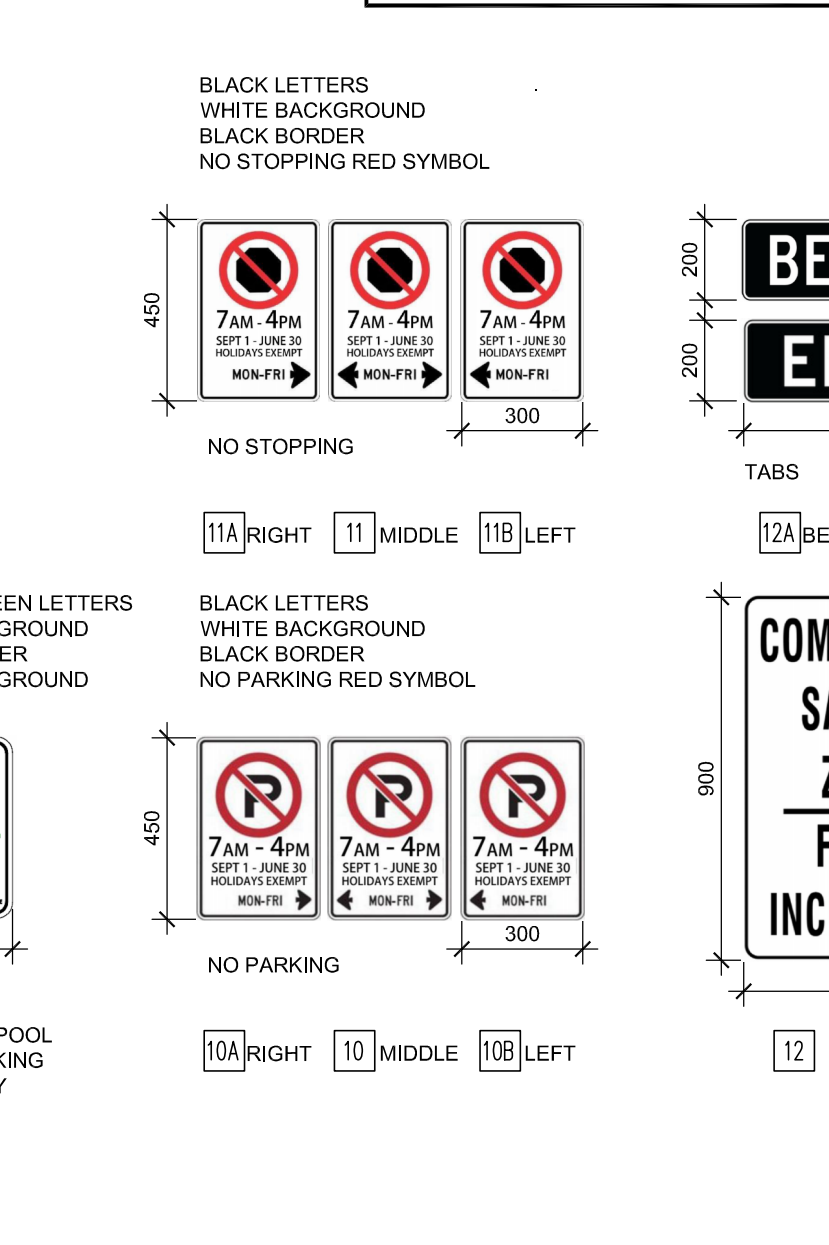
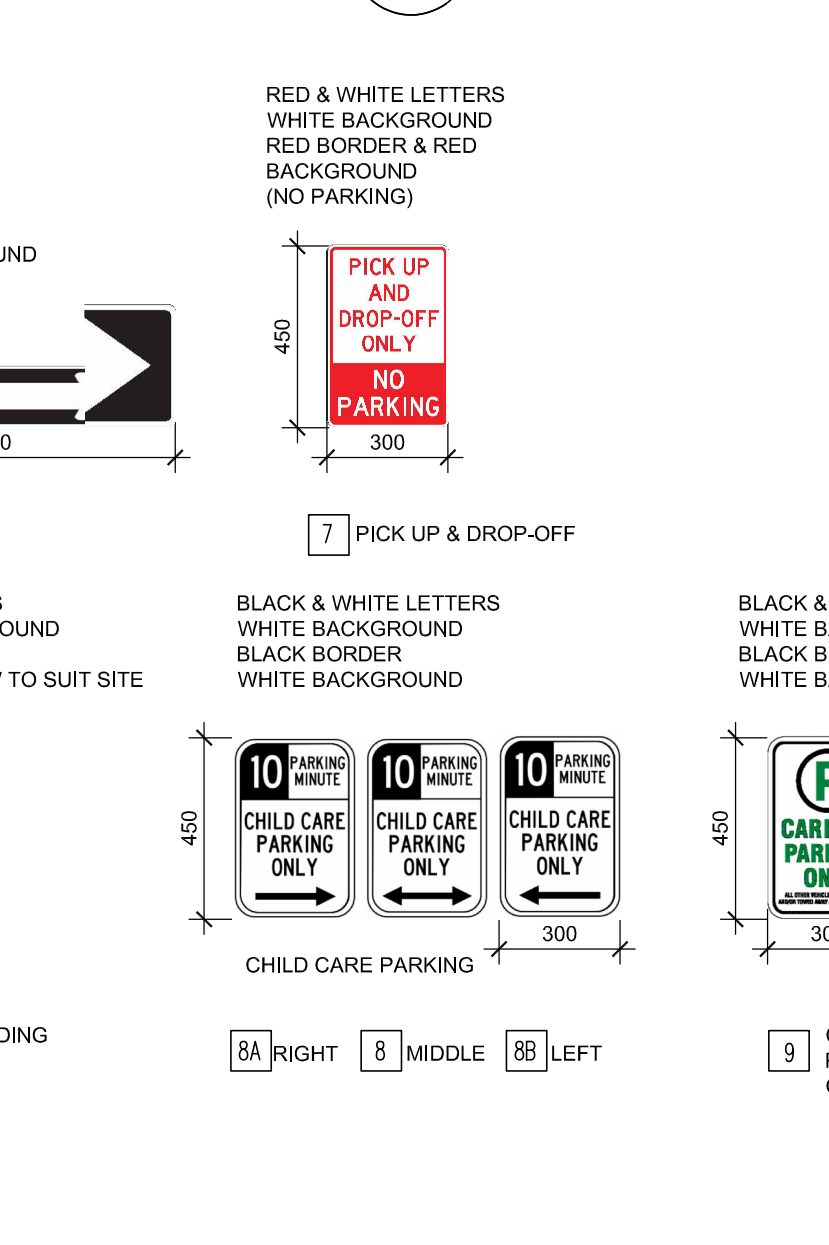
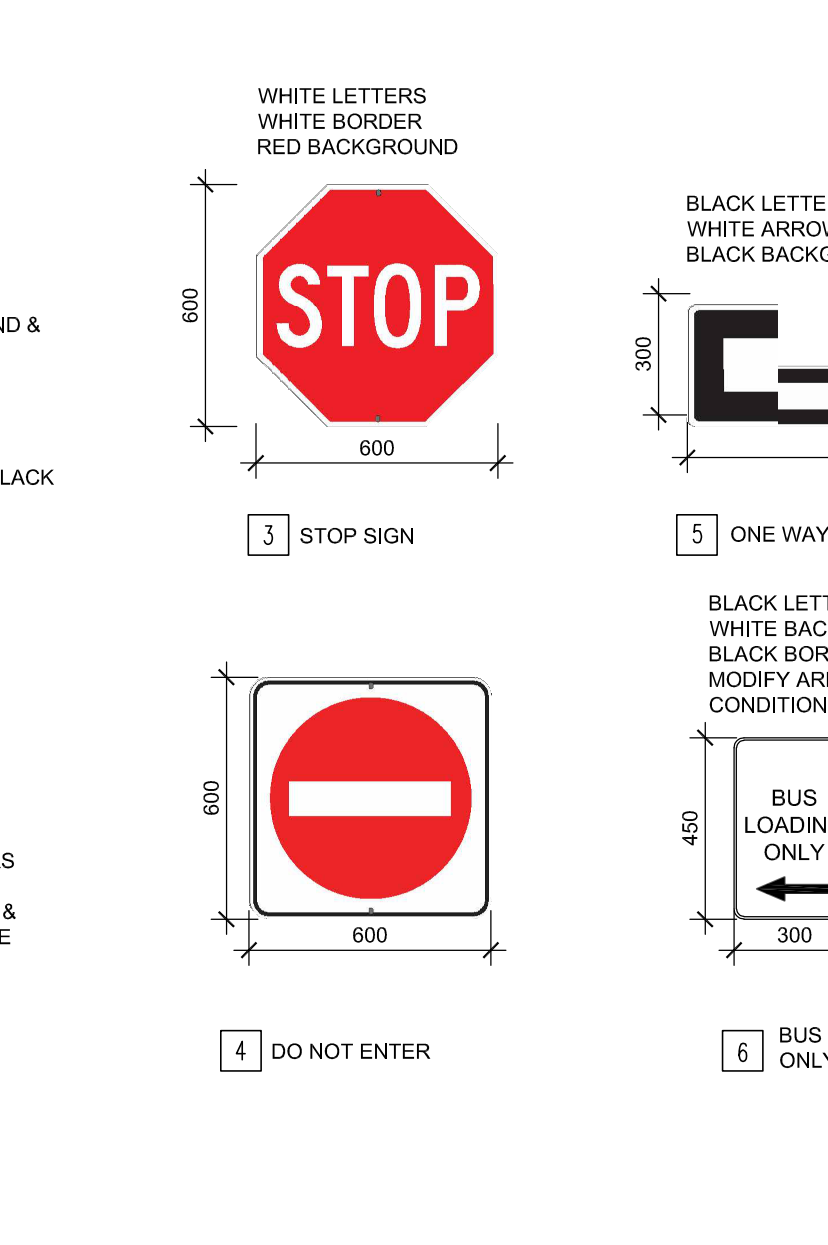
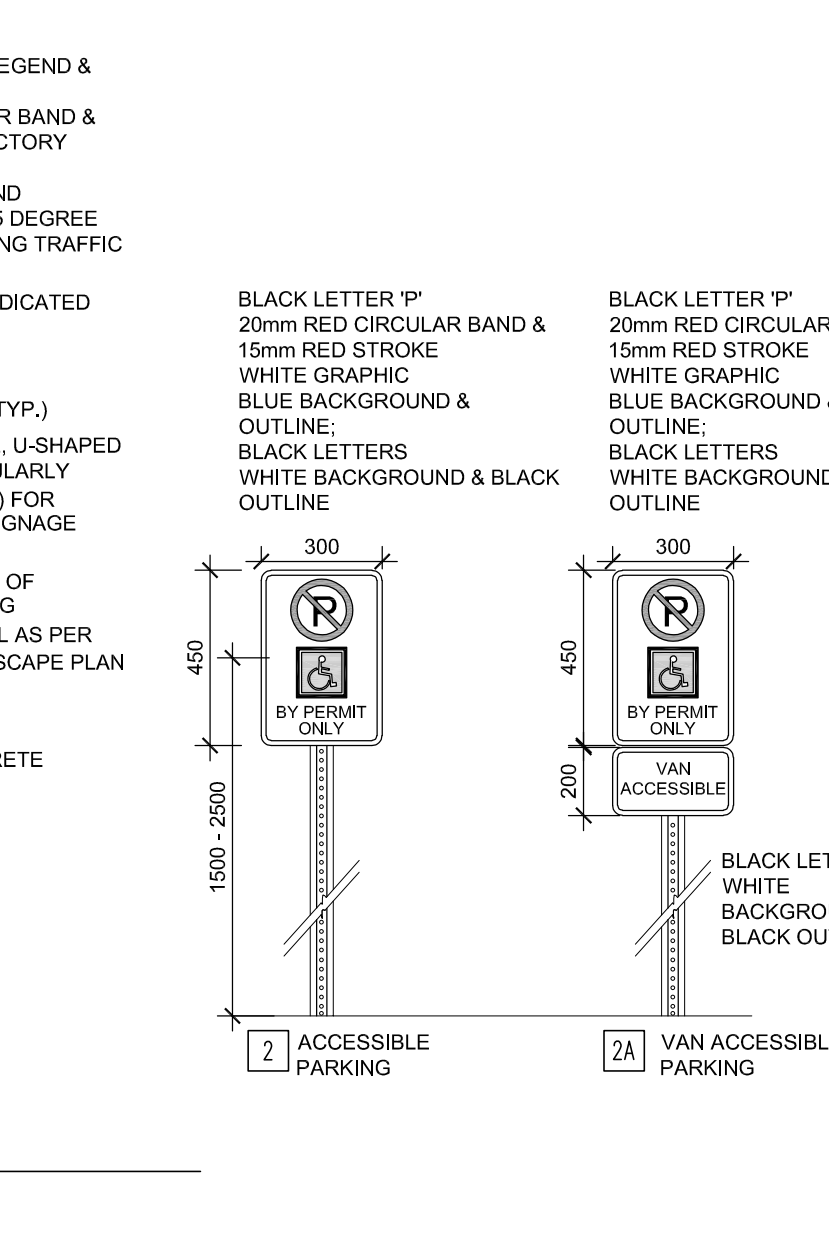
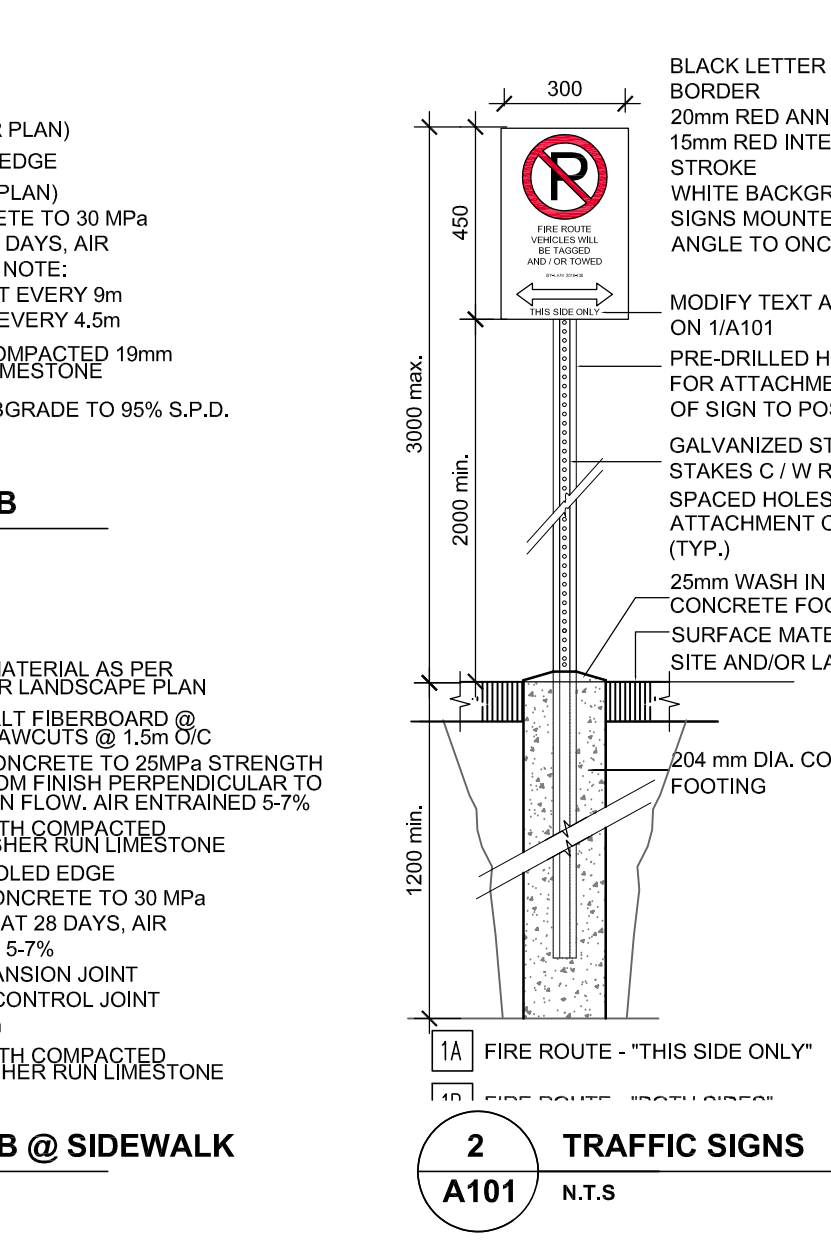
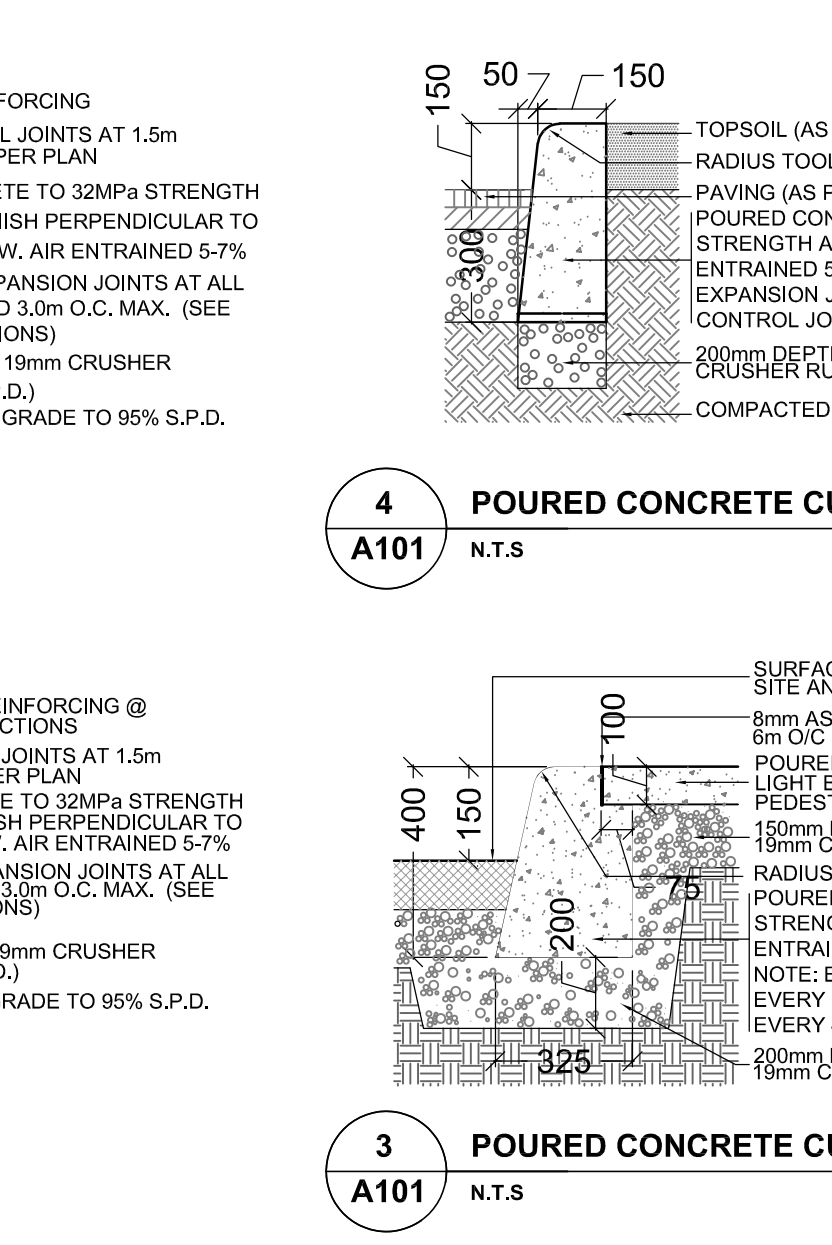
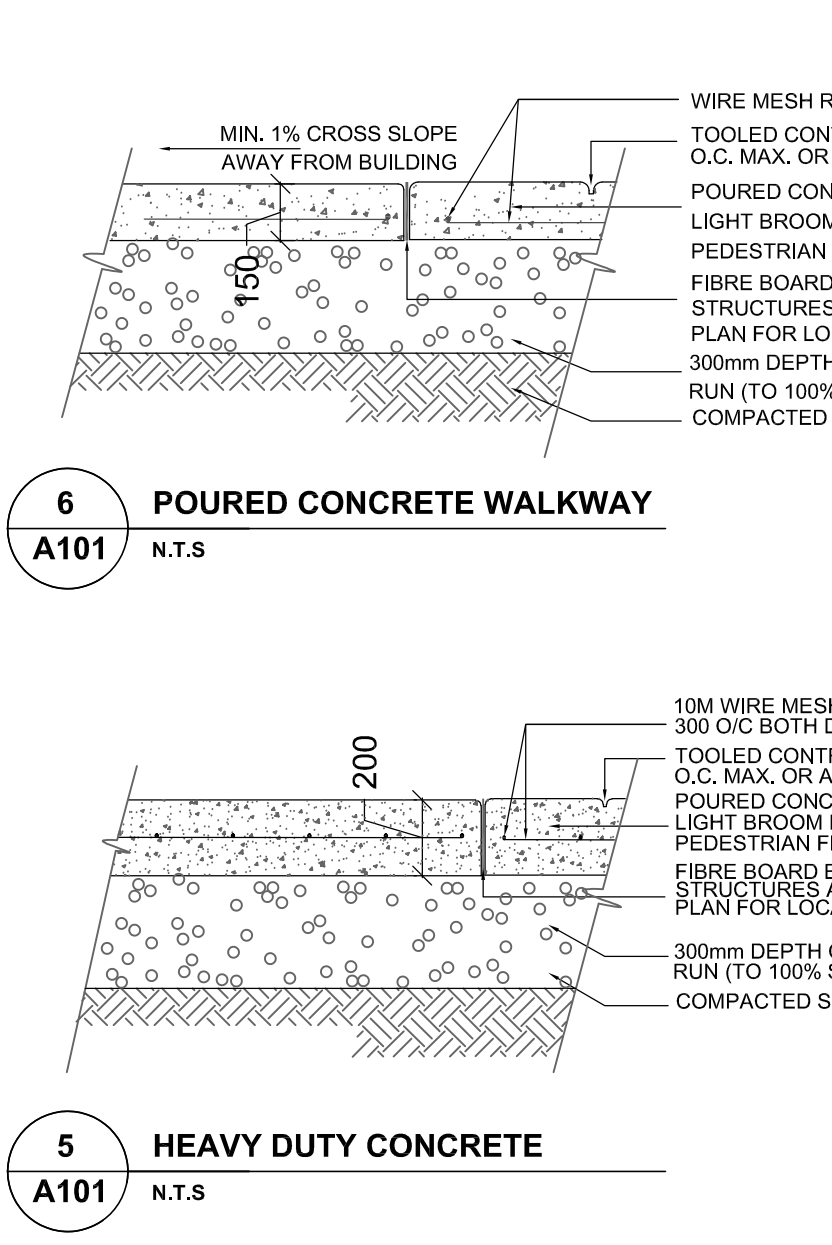
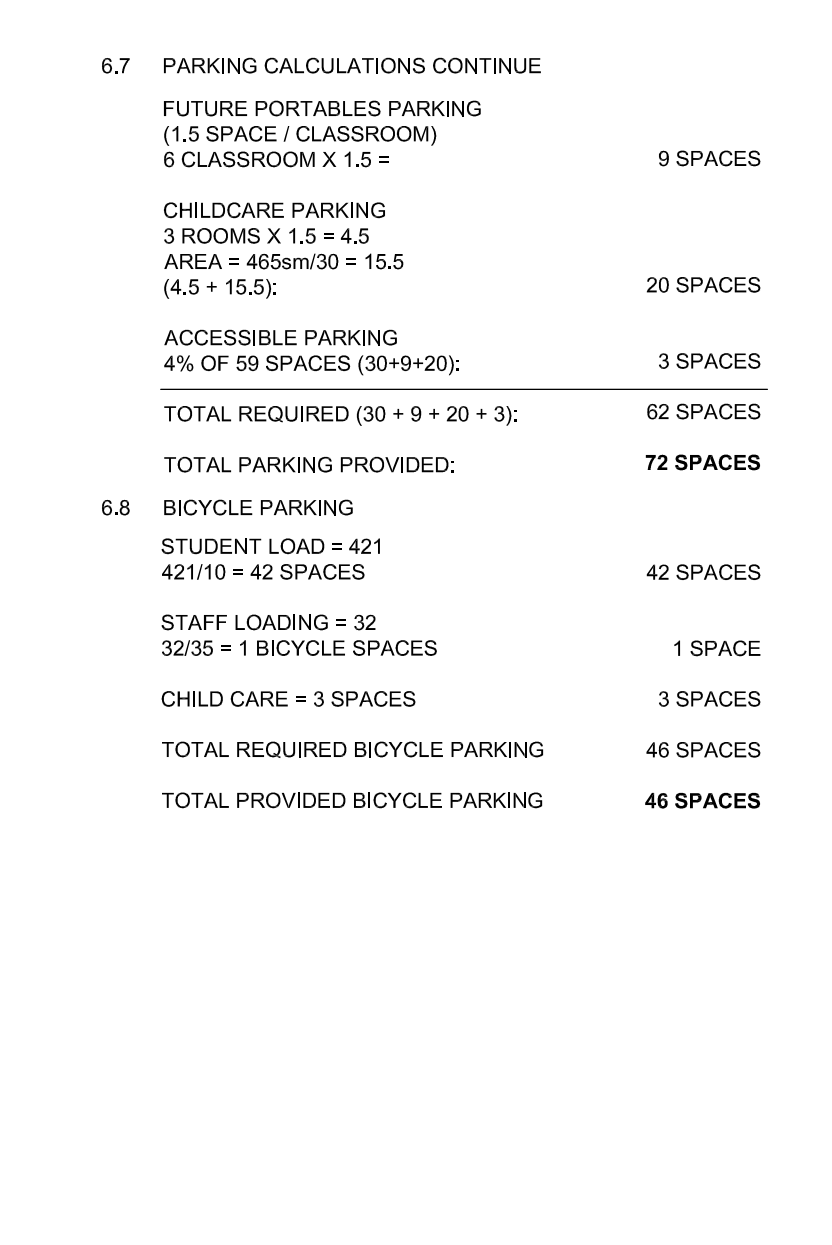
Mechanical and Electrical Consultants
RDZ Engineers Ltd.
17A - 30 Pennsylvania Ave
Vaughan, Ontario, L4K 4A5
Tel: 647-674-9666



PROPOSED CITY PARK (CPS)

BLOCK 299 PARK

4.3 BUILDING HEIGHT NO. OF STOREYS: 2 BUILDING HEIGHT TO TOP OF ROOF PARAPET: 9.28m	6.7 PARKING CALCULATIONS CONTINUE FUTURE PORTABLES PARKING (1.5 SPACE / CLASSROOM) 5 CLASSROOM X 1.5 = 7.5 SPACES
4.4 LANDSCAPING IN PARKING AREAS NORTH PARKING LOT AND BUS LOOP AREA = 1,888 m ² EAST PARKING LOT AREA = 1,596 m ² TOTAL PARKING LOT AREA = 3,483 m ² PARKING LOT LANDSCAPE AREA = 24.35 x 48 = 1167.84 m ²	9 SPACES CHILD CARE PARKING 3 ROOMS X 1.5 x 4.5 AREA = 45.00 m ² x 15.5 (4.5 x 15.5) = 69.75 m ² ACCESSIBLE PARKING 4% OF 59 SPACES (23+20) = 23 SPACES TOTAL REQUIRED (30 + 9 + 20 + 3) = 62 SPACES
5. OCCUPANCY CLASSIFICATION O.C.B. BUILDING CLASSIFICATION GROUP A, DIVISION 2 TWO STOREY, SPRINKLERED, O.C. CLAUSE 3.2.2.24	6.8 BICYCLE PARKING STUDENT LOAD = 421 42(110) = 42 SPACES STAFF LOADINGS = 12 32(35) = 3 SPACES CHILD CARE = 3 SPACES TOTAL REQUIRED BICYCLE PARKING = 48 SPACES TOTAL PROVIDED BICYCLE PARKING = 48 SPACES
6. PROJECT DATA 6.1 LOT AREA 24,560 m ² (2,456 ha)	6.2 BUILDING AREA 2,723 m ²
6.3 PROPOSED LOT COVERAGE 11.1%	6.4 GROUND FLOOR AREA 2,723 m ²
6.5 SECOND FLOOR AREA 1,646 m ²	6.6 TOTAL GROSS FLOOR AREA 4,369 m ²
6.7 PARKING CALCULATIONS SCHOOL PARKING (1.5 SPACE / CLASSROOM) 20 CLASSROOM X 1.5 = 30 SPACES	



- ### GENERAL NOTES
- THIS DRAWING IS ONLY TO BE USED AS A REFERENCE ONLY. THE CONTRACTOR TO COMPLY WITH THE TOWN OF EAST GWILMBURY'S SIGN BYLAW AND THE FIRE DEPARTMENT'S FIRE ROUTE ACCESS SIGNAGE.
 - INSTALL ALL SIGNAGE ON POSTS TO MAINTAIN 100% CLEARANCE UNDER SIGN ALONG PREDETERMINED SIDEWALK.
 - REFER TO L-01 FOR DETAILED INFORMATION FOR ACCESSIBLE SIGNS.

Project North		True North	
No.	Revisions	Date	
4	Re-issued for SPA	2025 01 22	
3	Re-issued for SPA	2024 10 31	
2	Issued for Site Plan Application	2024 04 08	
1	Issued for SPA Pre-Consultation	2023 09 23	
No.	Revision	Date	

Scale: 1:1

General Contractor shall check and verify all dimensions and report all errors and omissions to the architect. Do not scale drawings. Drawings shall not be used for construction purposes unless issued by the Architect for construction.

Drawing Title:
SITE PLAN & SITE DETAILS

Scale: AS INDICATED Date: 2024 07 05
Drawn by: KB Checked by: AG
Job No. 2307 Drawing No. A101