

Mount Albert Storm Outfalls, Retaining Wall and Trail Design

Pre-Engineering Activities Notice

East Gwillimbury is undertaking a project to restore the storm sewer outfalls and retaining wall structures within Vivian Creek Park (please refer to key plan on the following page). This project will restore Town infrastructure and address ongoing erosion and slope stability concerns within those areas.

The Town is working with consultant, Aquafor Beech Limited to complete a preliminary and detailed design for the restoration of four storm outfalls and one retaining wall structure. Opportunities to enhance the existing informal trail system connecting these features will be explored as part of the project design phase. Maintaining pedestrian connectivity near the retaining wall is also one of the design considerations. This is a multi-year project, including detailed design, public engagement and construction.

The purpose of this notice is to inform residents in the area of the project, that Aquafor Beech Limited and its subconsultants will be completing a variety of pre-engineering activities from July to September 2024 within Vivian Creek Park and its surrounding residential developments (the boundary within the “Investigation Limits” shown in the key plan on the following page), to gather background information to support the design process.

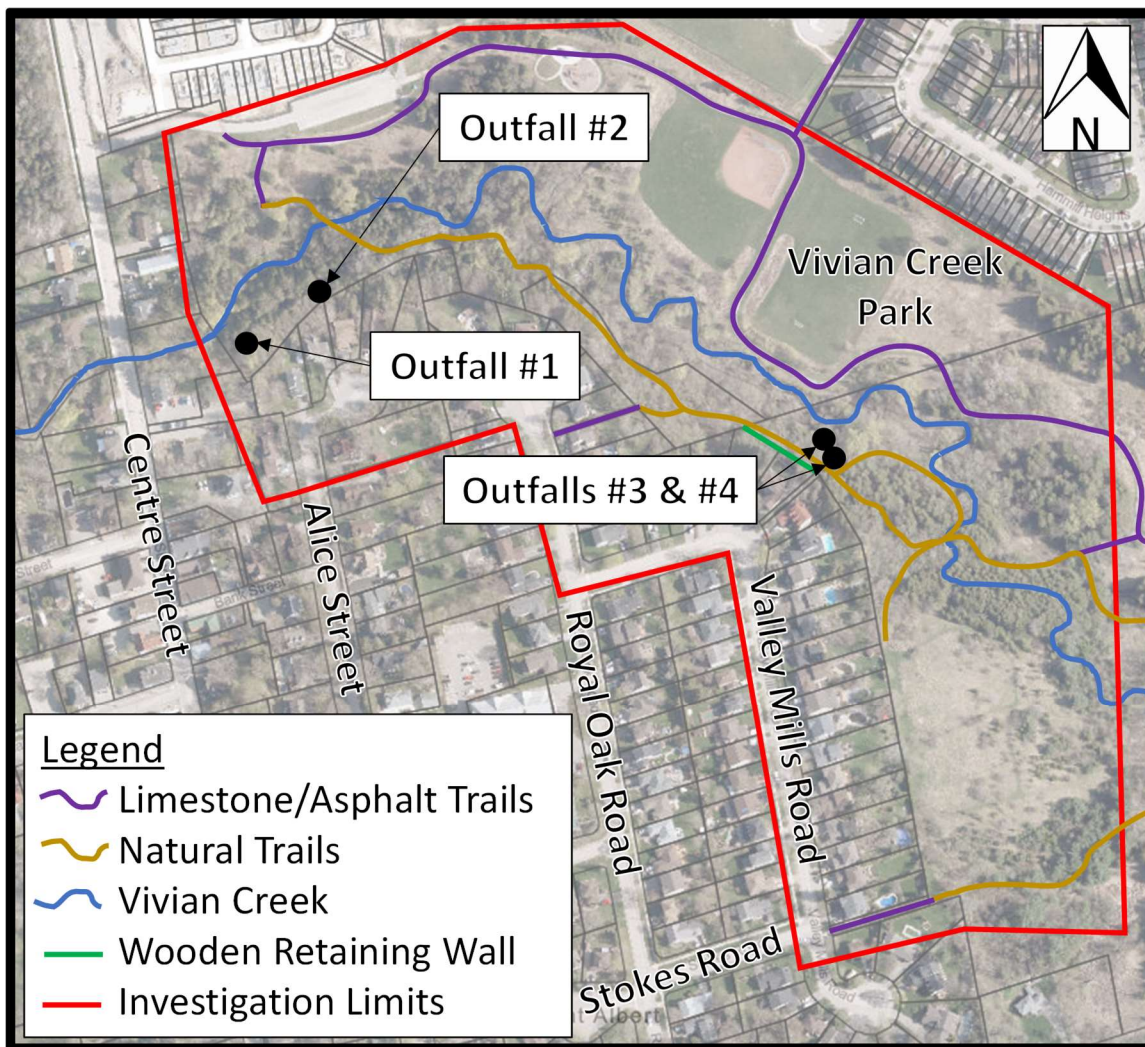
The pre-engineering activities and related impacts to traffic include:

- Topographic Survey – No disruption
- Arborist and Environmental Inventories – No disruption
- Stormwater and Geomorphic Assessment – No disruption
- Subsurface Utility Engineering (locating and marking utilities) – No disruption
- CCTV Video Sewer Inspection – Vehicles will be parked temporarily on residential streets, including Alice Street, Royal York Road, Valley Mills Road, etc. Local traffic will be maintained.

Town of East Gwillimbury

19000 Leslie Street, Sharon, Ontario L0G 1V0 | 905-478-4282 | Fax: 905-478-2808

www.eastgwillimbury.ca



Staff from Aquafor Beech Limited or their subconsultants may briefly enter onto your front yard to survey the location and elevation of key features such as trees, property bars/survey monuments, driveways, walkways, gardens, utilities, and any storm sewer infrastructure. This information will ensure accuracy of the design process, including considerations of the slopes and grades of your property for drainage, as well as the location of any infrastructure that may need to be repaired / altered as part of the

Town of East Gwillimbury

19000 Leslie Street, Sharon, Ontario L0G 1V0 | 905-478-4282 | Fax: 905-478-2808

www.eastgwillimbury.ca

future proposed works. There will be no intrusive (digging) work on private property as part of this investigative work.

Future geotechnical and higher-level subsurface utility engineering work (i.e., temporary exposure of buried utilities) may be required on select private properties as the detailed design progresses, however this will be coordinated directly on a property-by-property basis as required.

Additional Open Houses and opportunities to engage with the project will be scheduled to take place early next year. For more information, please visit www.eastgwillimbury.ca/infrastructureprojects

If you have any questions or concerns related to the upcoming field work, please contact:

Town of East Gwillimbury

Ray Wrzala, C.Tech.
Project Manager, Capital Projects
Tel: 905-478-4283 Ext. 3852
Email: rwrzala@eastgwillimbury.ca

Town of East Gwillimbury

Stephanie Fraser, OALA, CSLA
Landscape Architect
Tel: 905-478-4283 Ext. 3816
Email: sfraser@eastgwillimbury.ca

Aquafor Beech Limited

Robert Amos, M.A.Sc., P.Eng.,
Project Manager / Design Lead
Tel: 416-705-2367
Email: amos.r@aquaforb企业.com

Town of East Gwillimbury

19000 Leslie Street, Sharon, Ontario L0G 1V0 | 905-478-4282 | Fax: 905-478-2808
www.eastgwillimbury.ca